



Belize Forest Department

Hunting Seasons



Closed Season	Open Season

Green Iguana



Tony Rath Photography

Open: 1 July—31 January
Closed: 1 February —30 June

J	F	M	A	M	J	J	A	S	O	N	D

White-Lipped Peccary



Wildtracks

Open: 1 December—31 May
Closed: 1 June – 30 November

J	F	M	A	M	J	J	A	S	O	N	D

Collared Peccary



Jen Slater

Open: 1 December—31 May
Closed: 1 June – 30 November

J	F	M	A	M	J	J	A	S	O	N	D

Armadillo

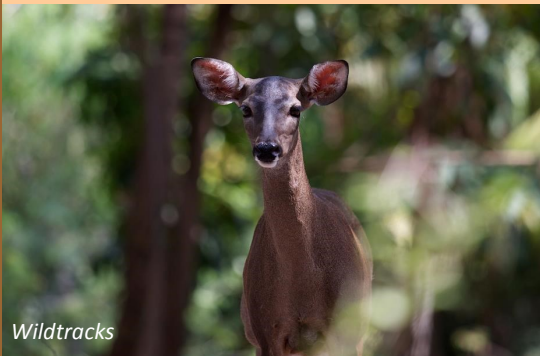


Eran Gissis

Open: 1 July —31 January
Closed: 1 February – 30 June

J	F	M	A	M	J	J	A	S	O	N	D

White-tailed Deer Red Brocket Deer



Wildtracks

Males
Open: 1 October- 30 June
Closed: 1 July- 30 September

Females
Open: 1 March -30 June
Closed: 1 July- 28 February

	J	F	M	A	M	J	J	A	S	O	N	D
male												
female												

Gibnut



Wildtracks

Open: 1 June —30 November
Closed: 1 December—31 May

J	F	M	A	M	J	J	A	S	O	N	D

Game Birds

Chachalaca, Crested Guan, Great Curassow,
Black Throated Bobwhite, Blue-Winged Teal,
Lesser Scaup



Francis Canto Jr.



Eran Gissis

Open: 16 July —31 January
Closed: 1 February —15 July

J	F	M	A	M	J	J	A	S	O	N	D

Offences carry fines up to \$10,000 and/or one year imprisonment

Apply for your hunting permit and report any illegal hunting to the Belize Forest Department

CONTACT US

San Ignacio Town- 804-3280
Orange Walk Town- 302- 220

Belmopan City—822-1524

Savannah Forest Station- 533-3014
Machaca Forest Station- 702-2765